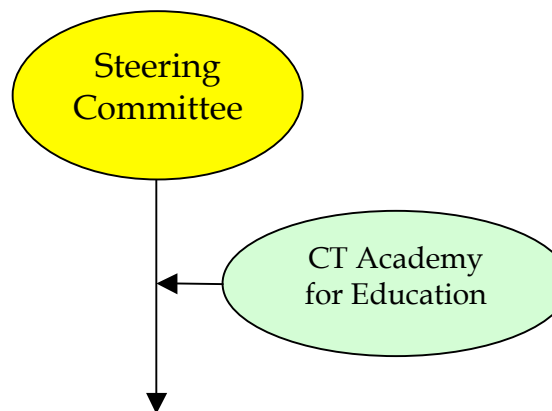




## Organizational Structure

- Phil Dukes, Governor's Office
- Mary Ann Hanley, Office of Workforce Competitiveness
- Betty Sternberg, Commissioner of Education
- Val Lewis, Commissioner of Higher Education
- Rob Keating, Office of Workforce Competitiveness
- Andrew De Rocco, CT Academy
- Merle Harris, Charter Oak College
- Kelli Wells, GE Foundation
- Elliot Ginsberg, 1<sup>st</sup> Congressional District
- Susan Palisano, CT Center for Advanced Technology



### Three Working Committees

### Co-Chairs

1. <b>Strategies</b> for the Governor, Legislature, State Boards of Education and Higher Education, local school districts and communities on how to improve interest and achievement in STEM education for all students, with specific emphasis placed on eradicating the achievement gap. This committee may also develop possible <b>Recommendations</b> for public policy initiatives;	<ul style="list-style-type: none"> <li>○ Harry Penner, Jr. &amp;</li> <li>○ Allan Taylor</li> <li>○ Betty Sternberg</li> <li>○ Valerie Lewis</li> </ul>
2. Create recommendations on how business and industry can best support K-16 STEM improvement initiatives, and develop recommendations on how to focus federal, state, and local resources on STEM within CT; and	<ul style="list-style-type: none"> <li>○ Judy Greiman CT Conference of Independent Colleges</li> <li>○ Chris Bruhl - Business Alliance of Southwest CT</li> <li>○ Joe Brennan - CBIA</li> </ul>
3. Recommend public outreach strategies and activities to measurably improve K-16 student interest in STEM.	<ul style="list-style-type: none"> <li>○ Jean Lavecchia, Northeast Utilities</li> <li>○ Elaine Pullen, Gerber Scientific</li> </ul>